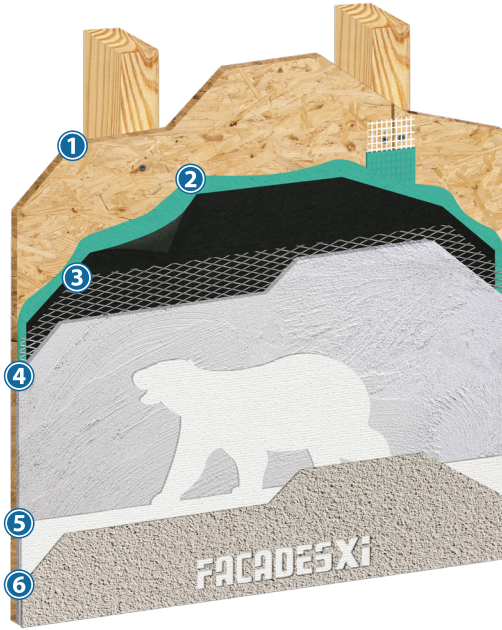


FACADES ONE WATERSHIELD ONE COAT STUCCO ASSEMBLY



SYSTEM DESCRIPTION

FacadesOne WaterShield is a tested and engineered One Coat stucco wall assembly with the added protection of a seamless water and air barrier coating. It combines the long life cycle, durability and traditional aesthetics of three coat stucco with lower labor costs and shorter scheduling.

Optional Advantages Upgrades

- Xi Advantage: EPS, XPS or Polyisocyanurate Insulation Board
- FractureStop: Decrease the appearance of hairline cracks in the stucco surface.
- Strength Advantage: Xi-Admix
- Consistency Enhancement: Xi-Alkali Resistant Primer
- Elastomeric finish coat bridges hairline cracks
- Drainage Mat for superior Drainage Efficiency

COMPONENTS

- ① **Substrate**
 - ASTM C1177 glass mat faced sheathing
 - ASTM C79/C1396 exterior gypsum sheathing
 - ASTM C1325 Type A Exterior cement-board
 - Exposure I or exterior plywood sheathing (grade C-D or better)
 - Exposure I OSB
 - Poured concrete/unit masonry/brick
- ② **WaterShield Water and Air Barrier Assembly**
 - WaterShield Water & Air Barrier
 - WaterShield Flashing Tape
 - WaterShield Joint Mesh
 - FXI FlashFill

Must be covered by a code compliant building paper
- ③ **Code compliant lath**
 - Metal Lath
 - Plastic Lath
 - Woven Wire
- ④ **FacadesOne One Coat stucco: 3/8" code compliant One Coat**
 - FacadesOne Concentrate: factory mix of portland cement complying with ASTM C150, chopped fibers, and proprietary ingredients mixed with water and sand in the field.
 - FacadesOne Sanded: factory mix of sand, portland cement complying with ASTM C150, chopped fibers, and proprietary ingredients mixed only with water in the field.
- ⑤ **Primer (Optional per specification) – for decreased efflorescence and highest finish coat aesthetic performance.**
 - Xi-Alkali Resistant Primer
- ⑥ **Finish Coat – Integrally colored and textured. Unlimited color selection, dirt pick up resistant**
 - Xi-Textured Acrylic Finish
 - Xi-Flexx Finish

Consult system specifications for exact component options.

USES

Exterior, interior, high impact requirement, new, retrofit, residential, multi-family, commercial, panelized, institutional, hotels, hospitals, retail centers, schools, condominiums, and government facilities

COMPLIANCE APPROVALS

FacadesOne is installed as a One Coat 3/8" thick code compliant assembly or as a traditional scratch & brown stucco complying with ASTM C926 when installed in compliance with the International Building Code/International Residential Code.

Complies with Chapters 14 and 25 of the IBC and Chapter 7 of the IRC.

Non-combustible and Fire resistant assemblies are available

ADVANTAGES

- WaterShield provides an enhanced water and air barrier for envelope protection
- Factory prepared mixed stucco base for consistent field quality control.
- Impact and puncture resistant.
- Highest quality acrylic and elastomeric finishes.
- EPS shapes for architectural details
- Reduced Labor
- Shorter construction schedule
- Lower Cladding Weight for decreased structural requirements
- Non-combustible and Fire resistant assemblies are available
- Enhanced Warranty Available

DESIGN CONSIDERATIONS

- All products must be installed in accordance with current Evaluation Report.
- Maximum allowable deflection L/360.
- The design wind load shall be determined by the Evaluation Report or per the structural engineer.
- Load roofs and install interior gypsum prior to installation of the stucco.
- Wood-based sheathing should be gapped 1/8-inch.
- All penetrations shall be properly treated, flashed and/or sealed using approved installation designed for water drainage to the exterior of the wall.
- Control joint placement is every 144 ft².
- Expansion joints are per project design.
- Expansion joints should be installed at floor line, dissimilar substrates, and through wall expansion joints. Final expansion and control joint design and location are the responsibility of the design professional.
- Sealant joints shall be detailed and installed per sealant manufacturer's recommendations.
- Slope is required on all horizontal surfaces greater than 1".

LIMITATIONS

- Framed walls must terminate stucco a minimum of 4-inches above grade, 2-inches above finished grade, or as specified by local code.
- Moist curing must be provided per specifications.
- Ambient and surface temperature must remain above 40°F (4°C) during and for 24-hours after set has occurred.
- Protect applied product from inclement weather until dry.
- Efflorescence is a natural occurrence when using cement based products subject to exterior or wet environments.
- No additives are permitted to any components unless specifically approved by FXI.
- Follow the application instructions for each component.
- Cracking will occur in portland cement stucco. This statement is true of any Portland cement based product and is not a defect of the product. Cracking can be minimized by following best practices in the FacadesOne Stucco Handbook; including proper installation of lath, proper use of control and expansion joints, proper sand selection, proper proportioning of stucco mix, avoiding the use of excess water, moist curing of the stucco after it has been applied, and proper sequencing of construction to avoid stresses in the freshly placed stucco.
- Use only on surfaces that are sound, dry, clean, unpainted, and free from any residue that may affect the ability of the FACADESXI Products to bond.
- Watershield should not be left exposed more than 6 months.
- Ensure Lath fasteners are secured into framing members.
- For use on vertical above grade walls only.
- Dark colors may show efflorescence more easily and imperfection in the stucco base coat compared to light colors.
- Maintenance Required: periodic cleaning, repair of cracks and impact damage if they occur, recoating to enhance appearance of weathered finish.

This system bulletin is not to be used as an application guide. See System specifications, details, and product datasheets for specific installation information.